

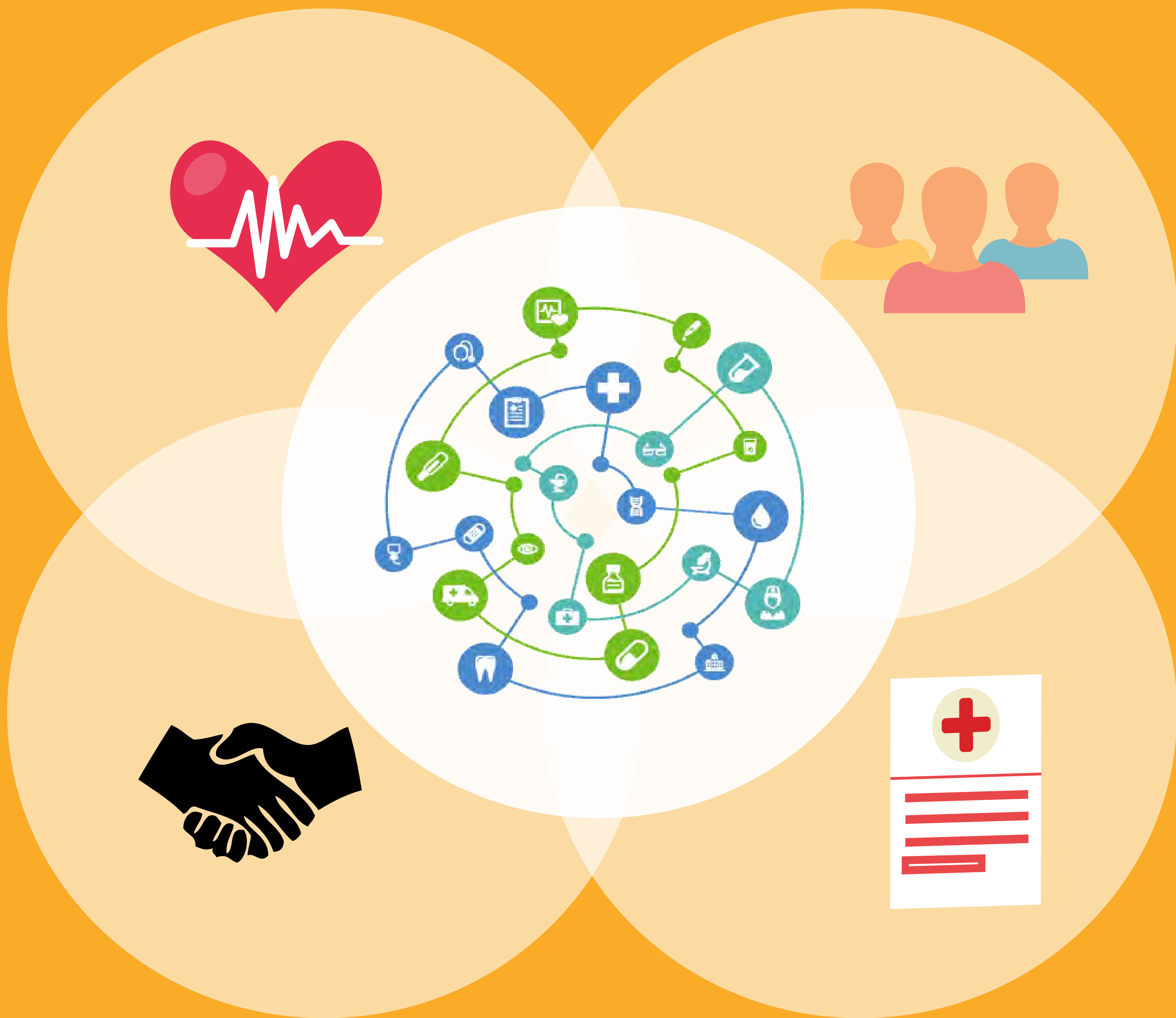
---

# Annual Report FY2017

## Johnson County Public Health

---

***Our Vision***  
***A healthful and supportive environment***  
***where all people of Johnson County can***  
***achieve optimal physical, mental, and social***  
***well-being.***







Dave Koch  
Director

To the residents and visitors of Johnson County,

In our effort to continually improve services in the community, the staff of Johnson County Public Health (JCPH) have made numerous accomplishments in FY17.

To identify ways that we can better serve Johnson County, staff worked on numerous quality improvement projects including decreasing callback times, increasing awareness of programs and services, and improving our reporting systems. These quality improvement projects ensured quality implementation of our services and programs that helped us better understand the importance of an integrated approach in our provision of services. Our Performance Management Plan focuses on the integrated approach and interconnection between our Community Health Needs Assessment, Health Improvement Plan, Strategic Plan, and our Quality Improvement Plan. Through our commitment and work towards improving services, we will be able to meet the needs of the residents and visitors of Johnson County in a more strategic, disciplined manner.

This past year we continued our efforts with community partners in addressing the seventeen health priorities identified within the Health Improvement Plan. These priority areas concentrate on addressing social determinants to improve health equity. Collaborations with numerous community organizations resulted in improved communications, strategic planning sessions, and the development of work plans with specific measurable goals. We will maintain focus on these efforts throughout the 2016-2020 Health Improvement Plan cycle.

We also want to recognize Doug Beardsley for his nine years of service to Johnson County Public Health and the citizens of Johnson County. Doug finished his career as the Director in June of 2017. We wish him the best and thank him for his devoted service to public health.

Please see our other stories of commitment and service within our annual report. As always, it's our pleasure to serve you.

Sincerely,

Dave Koch  
Director

Promoting Health. Preventing Harm.

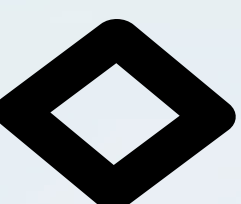
**MISSION**

Johnson County Public Health works to assure a healthy community through:

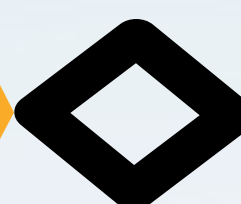
Community assessment and health planning, policy development and enforcement, health education, access to quality services, preventing epidemics, protecting the environment, and responding to disasters.

### Johnson County Board of Health Members 2017

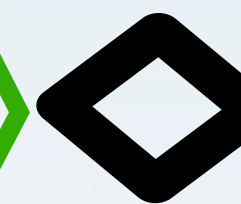
Bonnie Rubin,  
CLS, MBA, MHA



Michael P. McLaughlin, Ph.D



Zachary J. Pollock,  
PharmD, MS



Victoria Sharp,  
MD, MBA

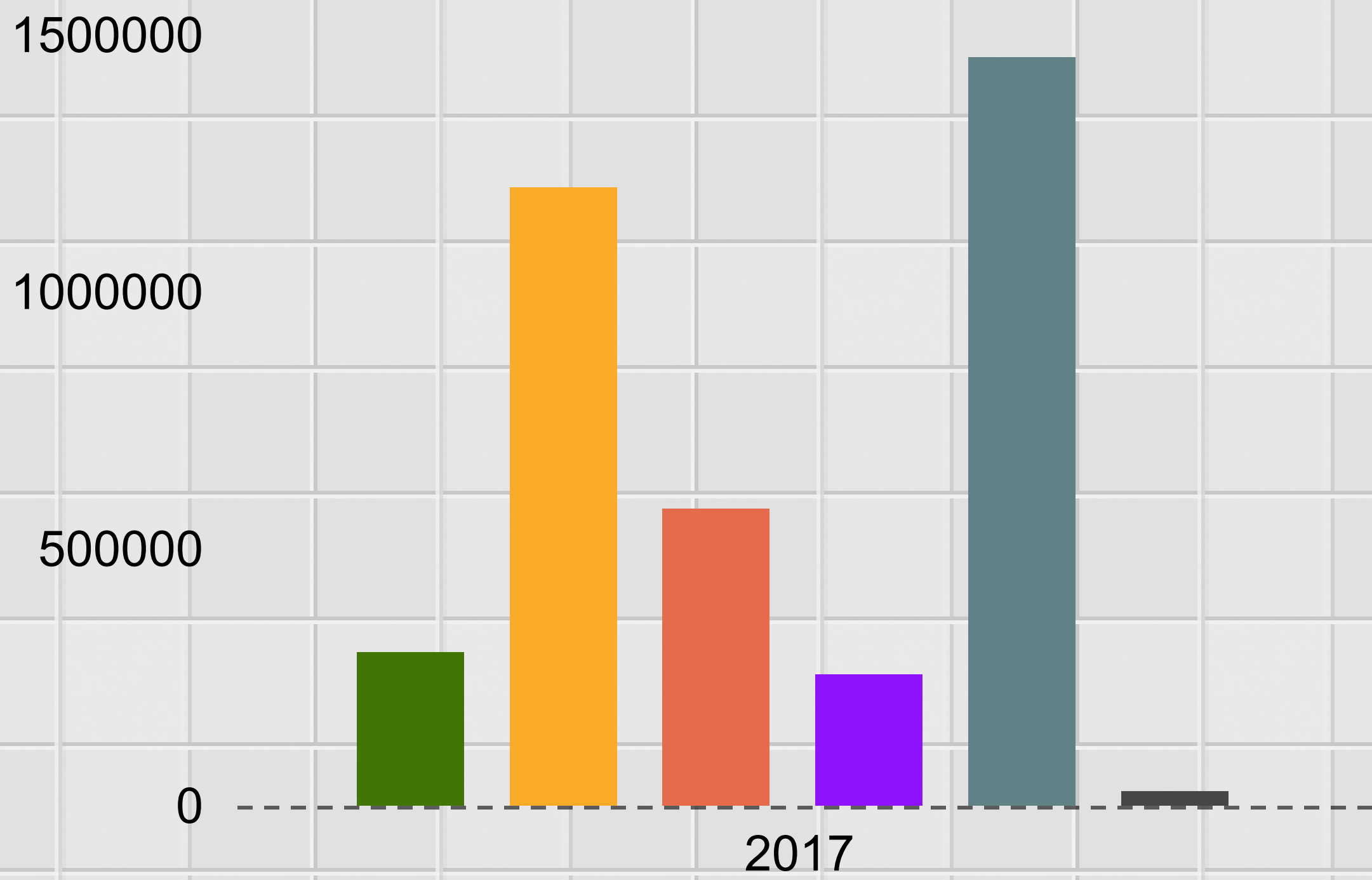


Peter D. Wallace, MD, MS



# Administration Division

## FY17 Revenues



## FY17 Expenditures



\*S&B= Salaries & Bene ts

<u>General Administration</u>	<u>FY17</u>	<u>FY16</u>
Department Program Areas	37	37
<u>Local Public Health Services Contract</u>	<u>FY17</u>	<u>FY16</u>
Modernization Hours	331	288
Home Care Aide Hours*	2,281	2,227
*Subcontracted through Visiting Nurse Association of Johnson County		
Public Health Nursing Visits*	277	452
*Subcontracted through Visiting Nurse Association of Johnson County		
Community Needs Assessment Hours	148	288
Disease Outbreak Investigation Hours	2,435	2,075

## FY17 GRANTS

Breastfeeding Peer Counseling	\$45,000
Dental Wellness	\$20,563
Ebola Virus Disease Preparedness & Response HPP	\$130,134
Emergency Response Multi-Year Program	\$70,610
Grants-to-Counties	\$35,816
HIV CTR & Hepatitis	\$119,250
Immunization Services	\$25,568
Local Public Health Services	\$289,906
Maternal Child & Adolescent Health, <i>hawk-i</i> , I-Smile & I-Smile @School	\$296,767
Patient Advocate Foundation (National Self Made Health Network Tobacco Cessation Project)	\$6,500
Public Health Emergency Preparedness	\$131,574
Tobacco	\$103,425
Tuberculosis	\$4,826
WIC	\$550,363





# Community Health Division



Mara Cheney, Health Planner



Kathryn Edel, HIV & Hepatitis C Health Educator



## HIV & HEPATITIS C

Increase in funding from IDPH

Increase number of Hepatitis C (HCV) tests from 50 to 150

Increase in condom distribution and number of HIV tests administered in the community

**WALK-IN TESTING**

Monday-Friday  
8am-4:30pm

Health Educator at Juneteenth Celebration

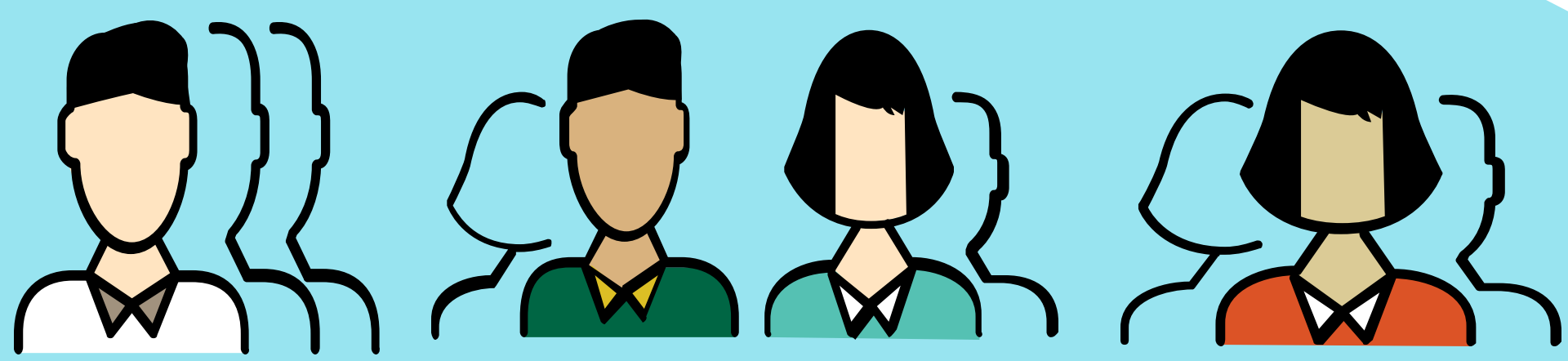


Stanzy Scheetz, Health Educator Assistant

A significant piece of preventing the transmission of HIV and Hepatitis C in our community is encouraging testing. At Johnson County Public Health, we are constantly searching for innovative strategies to reach individuals while taking a client-centered approach to our service delivery.

We believe through building new partnerships and strengthening existing relationships, we can have a larger collective impact. If you or your organization are interested in collaborating on an event and/or offering regular testing services, please reach out to Kathryn Edel at [kedel@co.johnson.ia.us](mailto:kedel@co.johnson.ia.us).

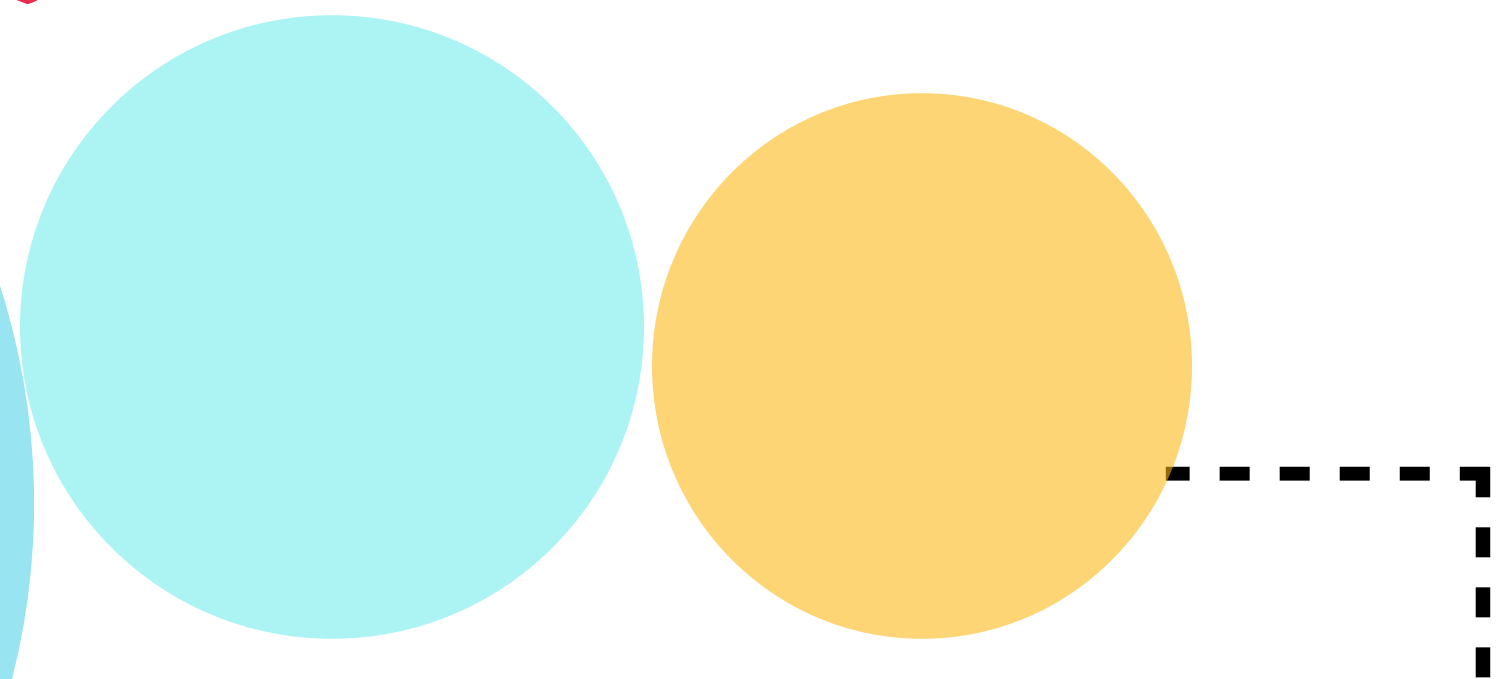
## Community Partnerships!



**Community Health:** Community Health programs create an environment that assists people in making healthy choices where they live, learn, work, and play. Through promotion, education, and regulation we strive to prevent diseases and promote health.

**Emergency Preparedness:** Emergency Preparedness program activities focus on improving public health response capabilities and communication systems in order to plan for, respond to, and recover from public health emergencies in Johnson County.

**Communicable Disease (CD):** CD Follow-Up is a county responsibility per Iowa Code. The program investigates cases of infectious diseases and institutes prevention measures to limit the spread of disease.





# Community Health Needs Assessment & Health Improvement Plan

## What is it?

CHNA is a systematic examination of the health status indicators for a given population that helps to identify key problems and assets in a community.

## How does it work?

Johnson county Public Health utilizes the Mobilizing for Action through Planning and Partnerships (MAPP) strategic planning process to collect and analyze quantitative and qualitative data in order to implement the Health Improvement Plan.

## What is the goal?

The emphasis of this 5-year assessment is to focus on the conditions in which people are born, grow, live, work, and age, also known as the Social Determinants of Health (SDoH) and learn which areas of health could be improved in Johnson County.

**HIP PRIORITIES**

DESIGNING ENVIRONMENTS & FOSTERING AN INCLUSIVE CULTURE:

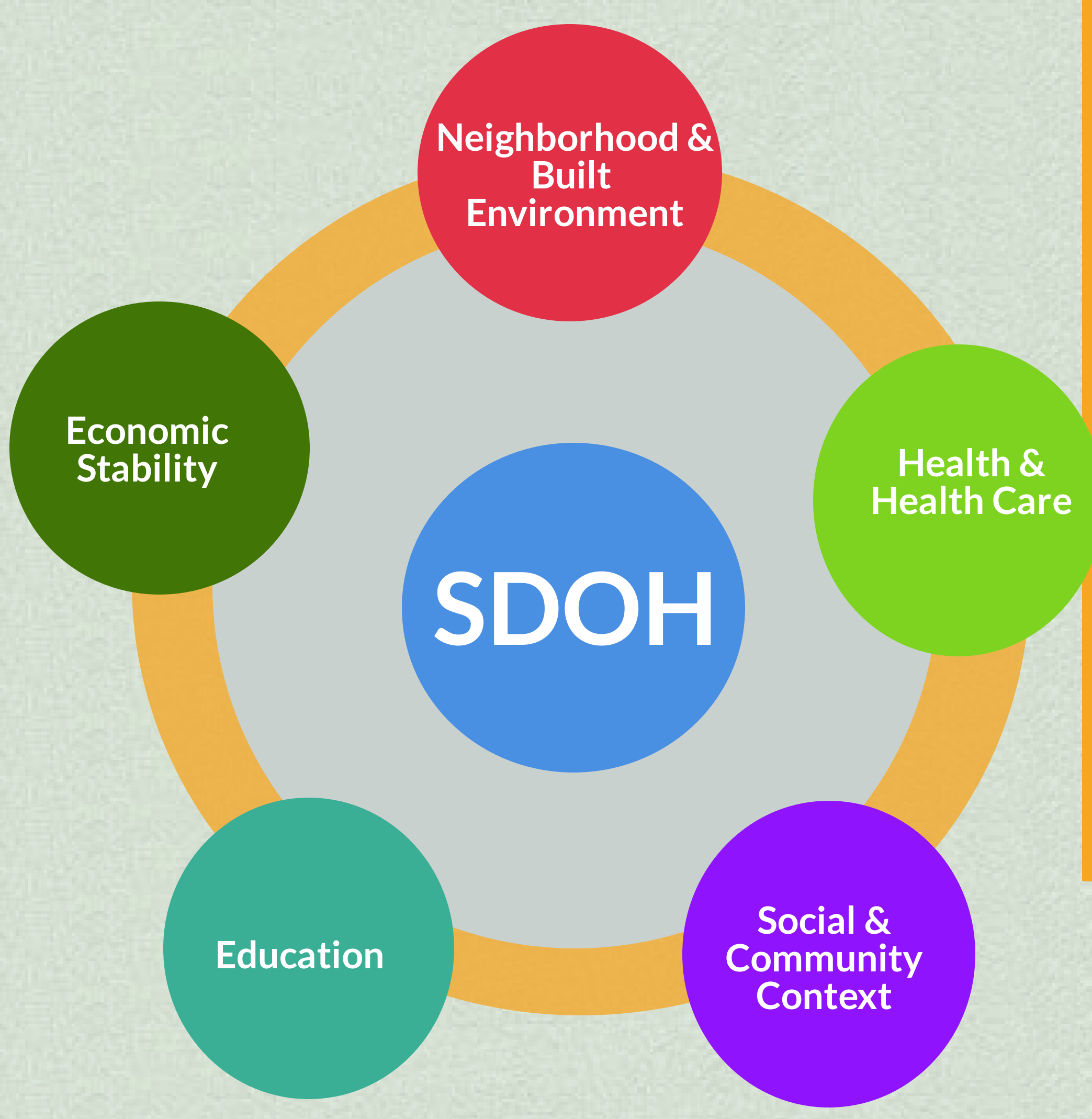
- Affordable Housing
- Economic Security
- Radon
- Transportation Services
- Community Diversity

INCREASING ACCESSIBILITY:

- Access to Health Care
- Access to Dental Care
- Elderly Care Services & Alzheimer's Disease Services
- Mental Health
- Suicide Prevention
- Shelter & Services for Victims of Abuse & Violence

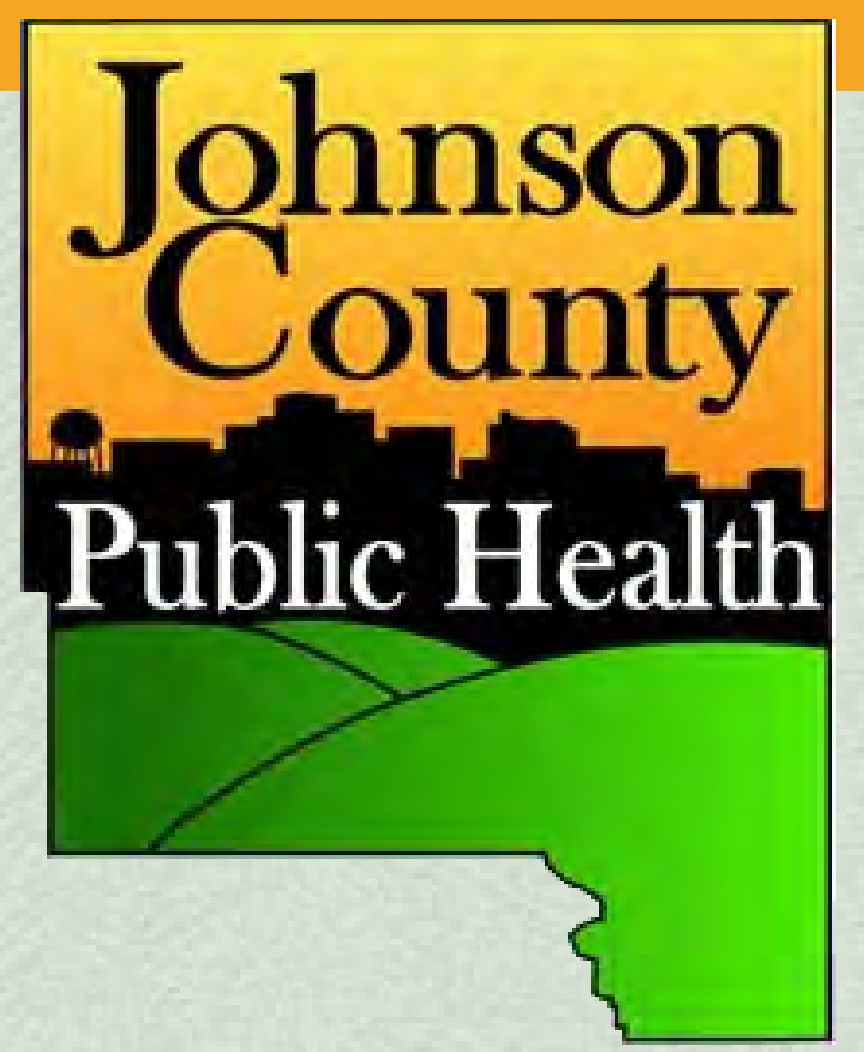
PROMOTING WELL-BEING:

- Alcohol
- Food Security
- Diabetes Screening & Education
- Illicit Drugs
- Obesity/Physical Activity
- Sexual Health



### Health Improvement Plan (HIP)

The Community Health Improvement Plan is a long-term, collaborative effort to address public health issues based on the results of assessment activities (CHNA). This plan, updated annually, focuses on the underlying causes of health concerns in the community and found three overarching strategic areas to consider. The HIP then identifies 17 specific health priorities that align with these public health issues.



For more information visit:  
[http://www.johnson-county.com/dept\\_health.aspx?id=22727](http://www.johnson-county.com/dept_health.aspx?id=22727)



# WIC/Maternal and Child Health Division

CLIENT  
STORIES

AND PHOTOS

Last week I gave immunizations to 3 boys from Japan who couldn't speak much English. Their Mother relayed to me that the six year old was "scared", so I brought in our "Buzzy" to show him how it felt and I used it to give him four vaccines. While giving the vaccines he sort of cried and giggled at the same time. So his ten and twelve year old brothers decided to try using "Buzzy" too. They each got four vaccines and laughed hysterically while I gave them their shots. They were very appreciative and said "Thank you!" several times. They were also all very happy to get stickers!

~Kelly Smith, RN



So very often, we have clients open the waiting room door and say things like "Oh they changed it?" or excitedly tell their children to "Look!" The waiting room changes are huge and the clients are loving it!

~Sharmi Kaefring-Oyarzun, Clerk II

A family came into our clinic originally from Jacksonville, FL who had been displaced due to the hurricanes. Due to language barriers, I needed some assistance to get their WIC information. Omaira, our WIC breastfeeding peer counselor, was able to help in translating. The family first went to Nashville for a few days and later came to Iowa because they heard about how wonderful people are here. Their baby, who was a newborn, needed formula and the family had not received medical attention in quite some time. I was able to get the family presumptive insurance so they could be seen right away and not wait for the lengthy insurance process. Both parents thanked us repeatedly for being so kind and helpful, saying we were the only nice people they have encountered throughout this whole experience.

This is why I love my job and love helping people.

~Amber Gorvin, Clerk II

A mother had a four-year-old son who had never been very interested in vegetables. He selected broccoli as his new vegetable to try. The mother reported later they were at the Farmers' Market and found broccoli for sale. She reminded her son about the coloring sheet of broccoli that he had from the WIC clinic and asked if he was ready to try it. He was hesitant, but agreed; tasted the broccoli at dinner but did not want to take a second bite. The next day, he tried raw broccoli with ranch and liked it. Since then he has asked for broccoli several times and started eating other raw vegetables.

~Kim Jennings, RD



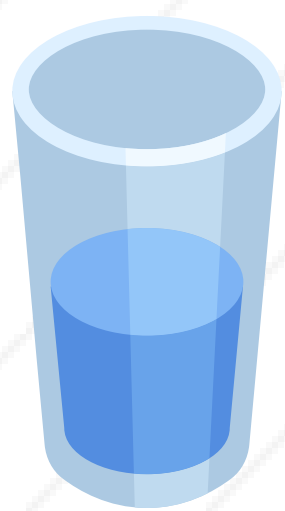


# Environmental Health Division

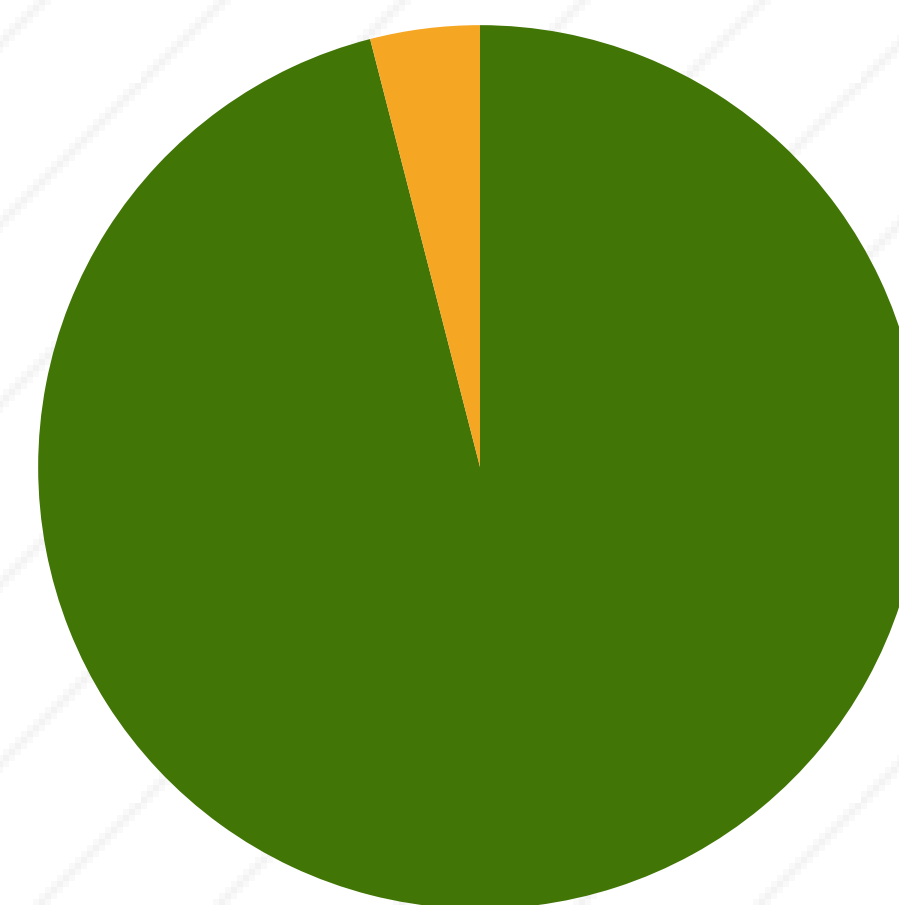


## Johnson County Wells Tested for Arsenic

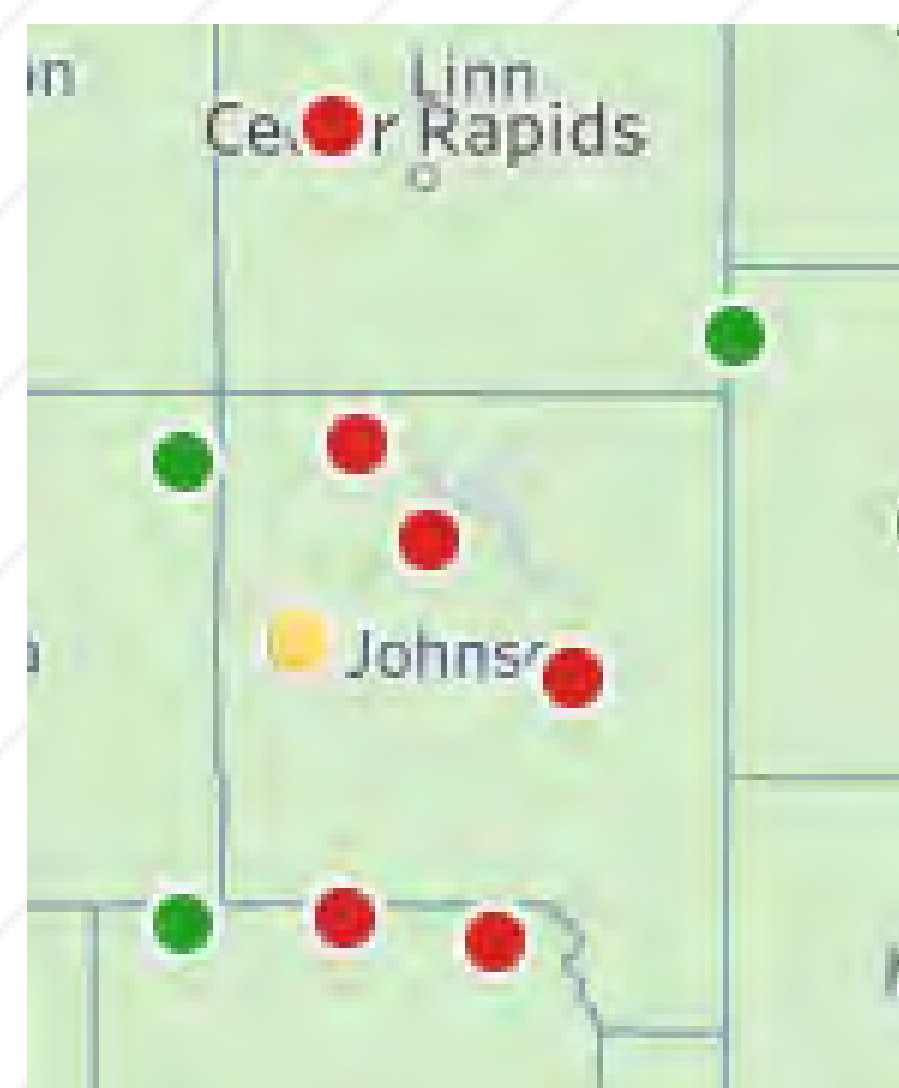
The Grant's To County (GTC) program allows Johnson County Public Health to provide free well water testing to Johnson County residents who use a private water well. Wells are tested for total coliform bacteria, E. coli bacteria and nitrates. On July 1st, 2015, arsenic was also included in the testing.



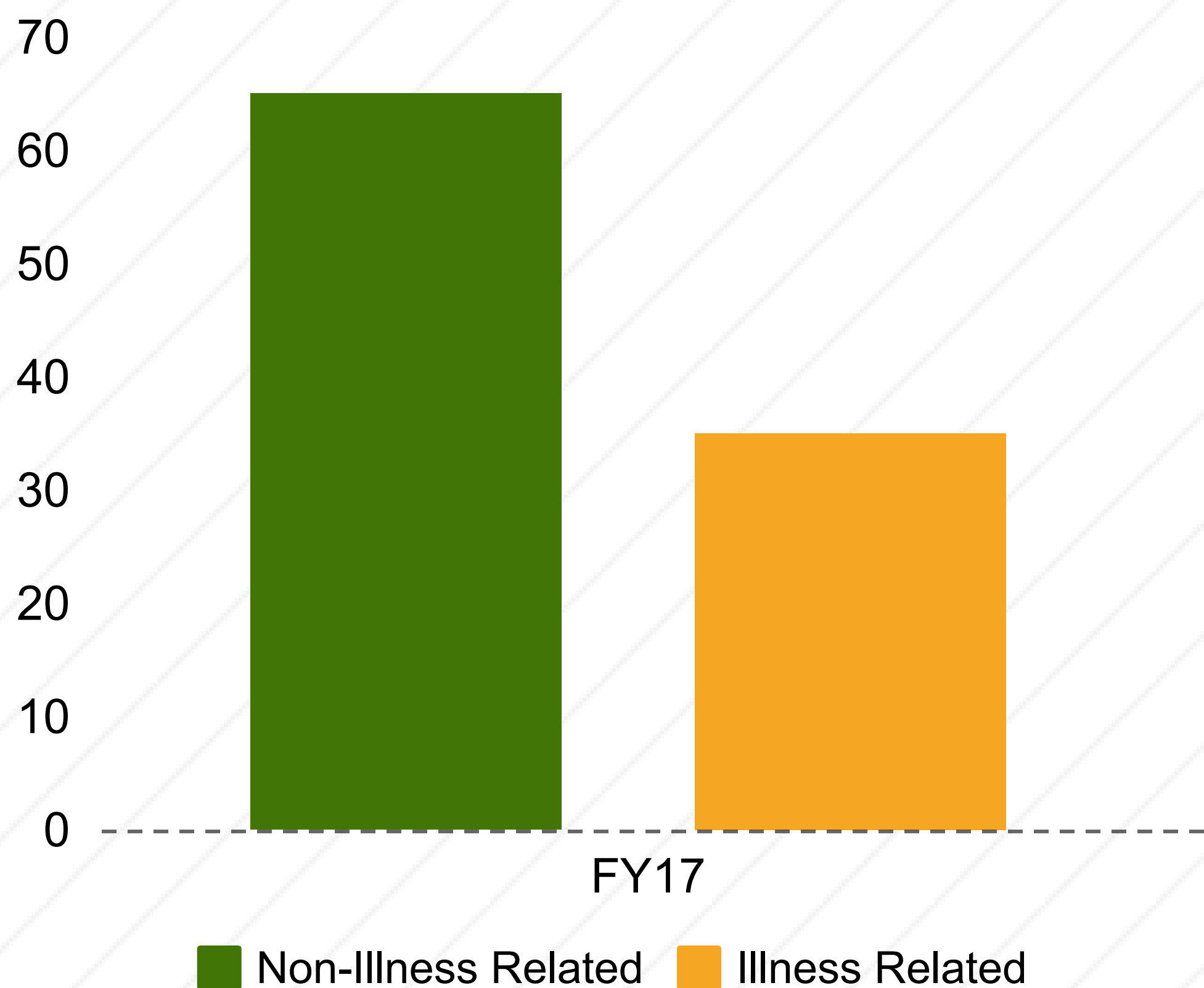
In FY17, Environmental Health Specialist staff sampled 79 private water wells in Johnson County for arsenic. Of those tests, just three, or 3.8% showed arsenic levels above the maximum contaminant level (MCL) of 10 parts per billion (ppb). This is in line with the statewide average of 4.5% of wells found to be above the MCL.



■ Less Than 10 ppb (96%) ■ Greater than 10 ppb (4%)



## Food Related Complaints in Johnson County



In September of 2016, Johnson County Public Health (JCPH) received a call from the Iowa Department of Inspections and Appeals stating seven cases of *Salmonella javiana* were reported in the Johnson/Linn county area. Three of these cases had eaten at a common establishment in Coralville. Due to the severity of the possible outbreak an Environmental Health Specialist was contacted after normal business hours. They responded immediately, conducting an illness investigation on site. During this investigation, a number of priority level foodborne illness risk factors were noted and corrected while the inspector was onsite. A variety of evidence and information was requested during the inspection including pictures, multiple delivery invoices, and food flowcharts.

Over the following week the inspector, working with the JCPH staff and establishment, worked together to provide extensive information to the Iowa Department of Public Health and Department of Inspection and Appeals. Working closely with JCPH staff, the establishment voluntarily closed down to perform a deep cleaning of the entire kitchen. As the investigation proceeded, it was discovered that multiple states were involved and the same chain restaurant was the source. In all, there were 28 lab confirmed matches in 8 states and 14 cases reported they ate at the involved establishment. From this event came a much stronger relationship between industry and regulators showing when a compromising event occurs both sides can work together as one to ensure food safety.



JCPH recognizes Doug Beardsley for his nine years of service to Johnson County Public Health and the citizens of Johnson County. Doug finished his career as the Director in June of 2017. We wish him the best and thank him for his devoted service to public health.

# DOUG BEARDSLEY





# FY17 Employees of JCPH

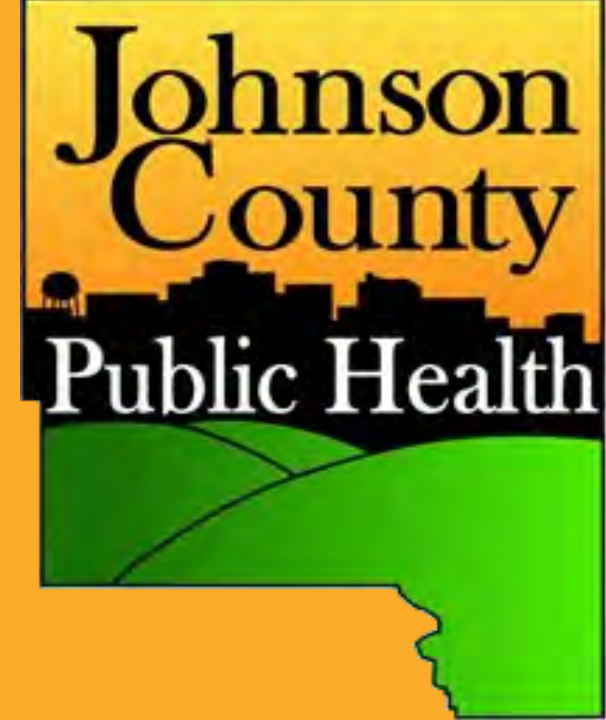
THIS IS PUBLIC  
HEALTH.  
[thisispublichealth.org](http://thisispublichealth.org)

## FY17 Employees

FY17 Employees	Division	Title
Beardsley, Doug	ADMIN	Director
Bechtel, James	EH	Environmental Health Specialist
Bowden, Karen	ADMIN	Clerk II
Bryant, Vickie	WIC/MCH	Clerk II
Camacho, Martina	WIC/MCH	Clerk II
Casella, Michael	EH	Environmental Health Specialist
Cheney, Mara	CH	Health Planner
Colony, Julie	ADMIN	Secretary II
Decker, Jason	EH	Environmental Health Specialist
Denneny, Susan	ADMIN	Secretary II
Dufano, Chuck	WIC/MCH	WIC/MCH Coordinator
Edel, Kathryn	CH	Health Educator
Fields, Keshia	ADMIN	Clerk II
Fisher, Nadine	WIC/MCH	WIC/MCH Manager
Fritz, Holly	ADMIN	Secretary II
Goetzinger, Paula	WIC/MCH	Child Care Nurse Consultant
Gorvin, Amber	WIC/MCH	Clerk II
Gustafson, Erik	EH	Environmental Health Specialist
Hackman, Amy	WIC/MCH	Nutritionist
Jennings, Kim	WIC/MCH	Nutritionist
Kaefring Oyarzun, Sharmi	WIC/MCH	Clerk II
Kitzmann, Tricia	ADMIN	Deputy Director
Koch, Dave	CH	Community Health Manager
Kramer, Dan	EH	Environmental Health Specialist
Lacina, James	EH	Environmental Health Manager
Lipman, Karen Klein	WIC/MCH	Nutritionist
Mayhew, Michelle	WIC/MCH	Public Health Nurse
Miller, Jennifer	CH	Disease Prevention Specialist
Milligan, Kaitlyn	WIC/MCH	Nutritionist
Mills, Becky	ADMIN	Business Manager
Norreet, Lonise	ADMIN	Administrative Assistant
O'Rourke, Kelly	WIC/MCH	Public Health Nurse
Riggan, Vicki	ADMIN	Clerk II
Riley, Jacob	CH	Disease Prevention Specialist
Scheetz, Stanzy	CH	Health Educator Assistant
Shafer, Cody	CH	Health Educator
Smith, Barbara	WIC/MCH	Public Health Nurse
Smith, Kelly	WIC/MCH	Public Health Nurse
Staab, Chanda	WIC/MCH	Clerk I
Stender, Chrystal	WIC/MCH	Clerk II
Stumpf, Kristy	WIC/MCH	Clerk II
Thul, Robert	EH	Environmental Health Specialist
Tosh, Eileen	WIC/MCH	Oral Health Coordinator
Vileta, Susan	CH	Health Educator
Wagner, Erica	WIC/MCH	WIC/MCH Data Specialist



# CONTACT INFORMATION



Phone: (319) 356-6040

Fax: (319) 356-6044

Address: Health & Human Services Building  
855 S. Dubuque St., Suite 217  
Iowa City, IA 52240

Office Hours: 8:00 am- 4:30 pm, Monday - Friday



**Johnson County Public Health Website:  
[www.johnson-county.com/health](http://www.johnson-county.com/health)**

